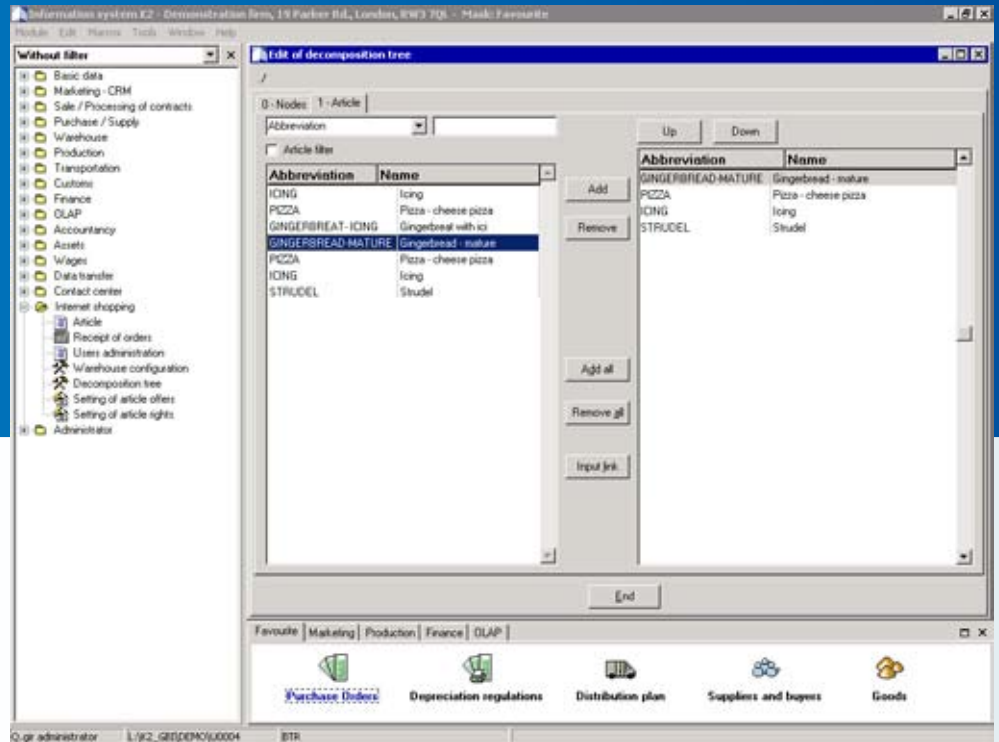




Provide your clients with possibility to purchase and monitor course of a business transaction on-line and non-stop!

FUNCTIONS

- > Assigning and displaying catalogue information about articles
- > Assigning rights for particular trees
- > Automatic generating e-mails
- > Automatic reception of orders
- > Browsing through contracts in the IS K2
- > Browsing through inferior documents in the IS K2
- > Definition of article drill down trees directly in the IS K2
- > Displaying any HTML information
- > Expandability to any agenda in the IS K2
- > Link to the system of price groups in the IS K2
- > Monitoring balance
- > Monitoring state of the Internet order
- > Off-line version
- > On-line version
- > Optional displaying stock levels
- > Ordering goods by means of Internet browser
- > Possibility of an order in progress
- > Possibility of multilingual setting



Information about current state of an order

The customer monitors course of settling his/her order immediately after confirmation of the receipt of demand. Except for the order itself, s/he can see in which phase the particular realizing documents are which have been created by the businessman, whether it concerns confirmation of the order, reservation, release note, or invoice. By means of these documents, the customer is informed about progress of his/her order as well as information of financial nature and information about time of delivery is provided. Furthermore, the customer can monitor, from his/her computer, movements of goods towards him/her owing to the link of the IS K2 Internet interface to the servers of the forwarders.

Quickness and simplicity

The I-shop makes it possible for the customer to register orders immediately and, at the same time, to provide information from the IS K2 in real time. In this way, the system offers on-line control over course of the order on the customer's side and automatic processing thereof on the businessman's side. In order to settle requirements, comfortable contract system of the IS K2 has been used. The price policy for particular customers is controlled directly from the IS K2. On the contractor's side, the businessman assigns extent of available data to the purchaser together with access rights.

Security

Special attention has been paid technology for protection of the firm's information system against possible access via Internet interface. The access database is fully configurable from the IS K2. Configurability is elaborated up to the design of environment for particular end users incl. precise setting of their access rights. In spite of the fact that the system inquiry-answer is realized and data are displayed in Internet in similar way as for an IS K2 user in a local network, it does not concern direct access to the database machine. The communication database is available via web interface serving as a data source for creation of requirements and it is created by projection of (determined extent of) data of the database machine.

Automatic response

The module I-shop supports effective processing of anonymous as well as non-anonymous requirements coming from Internet and, thereby, extends spectrum of IS K2 usage. Incoming demands are automatically queued; from this queue, the businessman receives the individual orders in order to settle them. Thereby, response for the customer placing the order is provided as well as a possibility not to settle unacceptable transactions. The module makes possible for the businessmen to register new customers by means of www interface, to look at cards of articles on-line while preserving setting of price groups in the IS K2 as well as to generate an overview of orders and documents issued in relation therewith.



FUNCTIONS

- > Possibility to adapt the graphic design
- > Possibility to generate a contract directly from Internet
- > Possible crypting of communication
- > Possible link to external databases
- > Presenting goods from the IS K2 in Internet
- > Printing documents from Internet
- > Projecting selected part of article database into Internet
- > Safe identification of users
- > Searching in the article database
- > Separate system of access rights directly in the IS K2
- > Separate system of user groups
- > Setting of price group for the sub-tree
- > Setting of concrete stocks for the sub-tree

Electronic catalogue

By appropriate projection of the article database into Internet, it is possible to add function of electronic catalogue. Display of prices respects fully pricing introduced in the IS K2. Furthermore, it is possible to display stock levels depending on assigned rights of the customer or defined group of customers or users. Particular lists in the catalogue form user defined templates into which data from various sources are entered – book of articles or special database which can be maintained directly in the IS K2. Therefore, it is not necessary to have special page with data for every article but it is sufficient to add a template and required data are entered automatically.

Openess of the system

Through the Internet interface, it is possible to display any data from the IS K2 databases into the www browser and on the contrary, to collect any information into the IS K2 databases. Owing to openess of the system, connection to external information systems of third parties is possible, which enables to monitor a contract from its creation till delivery to the customer concerned by the courier. The contract provides information about course of the delivery by means of www interface of its information system.

Optimizing performance

Performance of the Internet interface is raised by the possibility of parallel processing of requirements, whereby the performance is raised substantially, in particular on multiprocessing servers. Processing requirements from Internet is secured by processing of data independent from transaction system of the IS itself, which contributes to performance raising from the www Client's standpoint.

Customization

Openess of the whole system enables to add practically any module for collection or display of data from the IS K2. Most often, such modules are created as Client's program units. An example thereof is collection of marketing data or display of the progress during production of ordered products. To the system, possibility is added to communicate with the mail server. With regard to this property, the I-shop can generate automatically an e-mail depending on almost any event.

Drill down tree

It is possible to create it manually or to generate it automatically on the base of data from the IS K2, table from MS Excel etc. To every node in the tree, it is possible to assign groups of users which can see it or stocks from which disposal should be displayed and price group the prices of which replaces original data in the given node (usage for example for clearance sales). Furthermore, it is possible to set e.g. algorithms for establishing the price or stock disposal.

Statistics and marketing data

Pursuant to the configuration, it is possible to save statistics concerning visits of the I-shop or statistics concerning the particular displayed pages. For the pages, special data are saved, for example to the catalogue sheets, number of article is saved catalogue sheet of which has been displayed. Thus, it is possible to monitor which articles are most interesting for the customers, who has displayed certain documents etc.

Way of operation

The I-shop can be implemented and operated both in on-line and off-line mode.