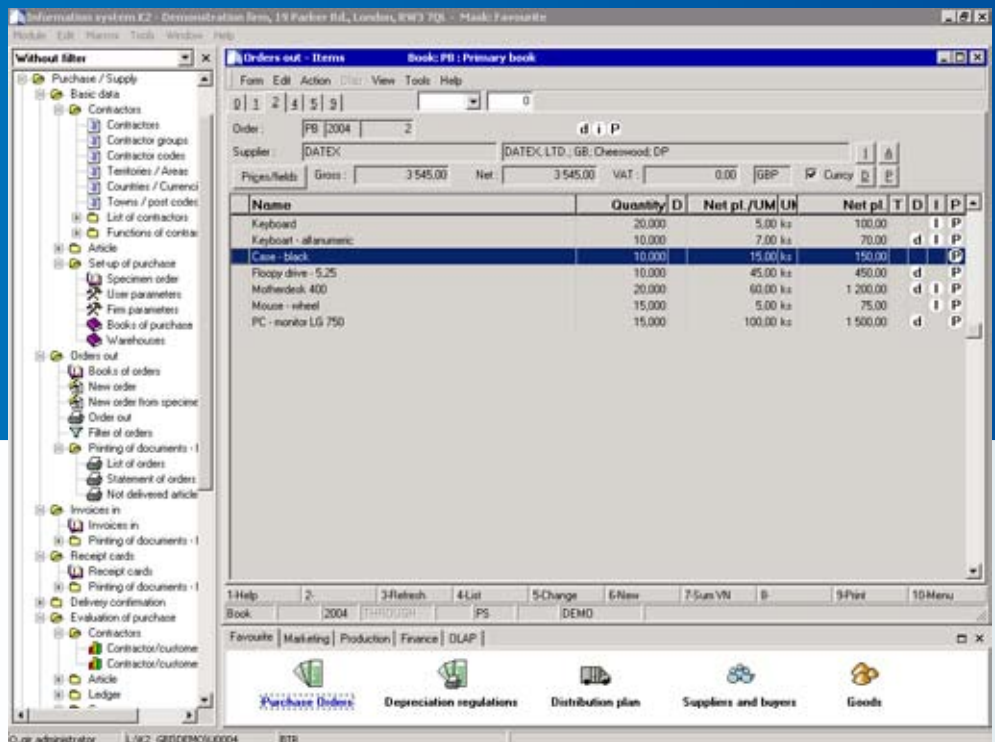




Provide your clients with possibility to purchase and monitor course of a business transaction on-line and non-stop!

FUNCTIONS

- > Accounts payable ledger
- > Additional information about business partners
- > Administration of VAT codes
- > Advance invoices
- > Alternate units – several units for one article card
- > Apportionment of a purchase of goods among various contractors
- > Automatic assignment of delivered goods to contracts
- > Automatic draft of orders
- > Automatic generation of cooperation purchase
- > Automatic generation of mutual offsets
- > Bar code – several codes for one article card
- > Bills of materials
- > Book of articles
- > Breakdowns of article cards
- > Classification of business partners according to the two abbreviations, groups, codes, ID No
- > Communication with contractors via EDI/XML
- > Contact persons
- > Contractor's article codes
- > Contractor's price lists
- > Contractor's wrapping account
- > Cost differentiation according to the persons, cost centres, contracts, and other independent codes
- > Credit notes in
- > Customs tariff
- > Definition of payment and discount conditions
- > Development of purchase prices
- > Directory of business partners
- > Electronic scale



System control

The module Purchase is based on a book displaying activities realized in connection with the created order. Therein, state of settlement of the order concerned (planned or confirmed delivery date, existence of a receipt card, taking the delivered goods into the stock by the stockkeeper, creation of corresponding invoice in, approval of invoice etc.) is given, namely by items. The result thereof is methodical and programme security when the quantities received in stock correspond with quantity and price as stated in the received documents. Naturally, it is possible to round off a document individually upon entry so that its electronic form corresponds with its hard copy.

Purchase management

Control of entry of goods into an enterprise constitutes combination of two basic needs. The first one concerns cyclical ordering goods for stock on the base of previous periods and orders in. The other aspect concerns direct ordering for contracts with immediate link to possible sale to the customer. Both cases can be automated in order to prepare draft of an order which can be confirmed directly or modified before sending.

Purchase directness

All purchases from the contractors are linked firmly with contracts which they should cover. It means that it is possible to monitor exactly in what extent and by means of which documents the business transactions are being realized. The link of the purchase with the sale need not be used by the user. It is possible to make purchases directly into stock.

Informative value

For each purchased item, dates of creation and sending of the orders, expected delivery by the contractor, planned delivery date by the orderer, confirmation of the delivery date, data of receipt and date of takeover into stock are recorded by the system. Recorded dates distinguish quantities and purchase prices. In order to ensure compliance with the requirements concerning quality, linked documents, material attests, features of received goods etc. are recorded in specific way.

Check of all formalities

Stock movements of items for which check of obligatory fields has been set will be not allowed by the programme (for example batches, serial number, location etc.), if such fields have been not filled. At the same time, performance of a stock movement may be dependant on other documents which are inseparable from an item (check record, approval documentation etc.).

**FUNCTIONS**

- > Entering properties for received batches
- > Evaluation of contractors
- > Exchange differences for invoices in on certain day
- > Foreign invoices in foreign currencies
- > Inserting orders into joint contracts
- > Mass creation of commercial documents
- > Monitoring claims with contractors
- > Monitoring of credit drawing by contractors
- > Monitoring of order fulfilment
- > Monitoring purchases for contracts
- > Monitoring settlement of invoices in
- > Multi-level confirmation of delivery
- > Ordering in batches from several contractors
- > Print of labels
- > Print of orders in the contractor's language and marking
- > Print of orders, sending by faxmodem, e-mail
- > Purchase agenda
- > Purchase management for particular cost centres
- > Purchasing assortment kinds
- > Purchasing by-cost breakdown according to various criteria – quantity, weight, price
- > Receipt of goods to stock
- > Returnables
- > Selection of articles into orders according to the contractors
- > Selection of the best contractors
- > Several addresses to one accounting unit
- > Solution of track deliveries
- > Statement of non-delivered goods
- > Statistics concerning purchase of goods
- > Statistics concerning purchases from contractors
- > Texts of orders of any size
- > VAT from invoices in

Actual purchase prices

The principle of assigning concrete purchases to particular contracts enables targeted searching for origin of goods. This is of relevance when purchasing raw materials for production because except for clear determination of materials from which the given piece has been produced, actual input prices are included into product valuation.

Acquisition by-cost

By setting of every stock card, basic behaviour of acquisition by-cost is determined. For concrete documents, specific by-cost can be broken down connected with their realization. Decomposition into document items is possible on the base of various criteria typical for the case given.

Automatic drafts of an order

Linkage with the module Stock results in drafting concrete orders. In the draft of an order, usual stock movements, quantity discount, quickness of the delivery, packing size etc. can be taken into account. The IS K2 selects optimal contractor in accordance with entered criteria (date, price, quantity, payment conditions, etc.) from the contractors entered for the item in question. Method of creation of the order draft can be adapted to the individual needs of the company concerned directly in program script.

Solution of track deliveries

Due to the nature of a business transaction, control of direct delivery of goods from the producer (supplier) to the customer is sometimes necessary, while the documents are issued by an agent. It concerns solution of so-called "track deliveries" which are realized by means of a fictitious stock in order to monitor goods on way etc. These cases are solved by the IS K2 by linkage with the orders of final customers through article codes.

Bar code

Usage of the bar code enables to speed up receipt and primary check when taking over items into stock. By using several bar codes marking various packages of one and the same item, natural check of the total recorded quantity and physical quantity taken over into the stock is ensured. Usage for manufacturing and serial numbers expressed by means of the bar code is analogous.

Electronic shop

Common feature of the commercial modules is possibility to communicate with Internet. The module Purchase supports export of orders to the contractors to their home addresses similarly as it is possible to receive orders from Internet. The system supports also communication in EDI or XML format.

Evaluation of contractors

The IS K2 enables to evaluate particular deliveries from the contractors, primarily with regard to quickness, reliability, quality, price, quantity etc. Pursuant to statistically selected criteria, evaluation for concrete contractor is saved in the article card. Subsequently, the IS K2 makes it possible to define optimal contractor for each article card. This can be entered manually or assigned pursuant to the weighted criteria.

Generation of discrepancies

In the IS K2 it is possible to evaluate differences between the required items, delivery of them in the required term and quantity, with agreed price and the reality. Output thereof can be a file with letters (using templates) for all contractors with request concerning elimination of any discrepancies between the order and delivery in question.

Creation of documents

The programme script enables to create required documents to the individual purchase items according to the ISO standards or other quality systems. Received documentation can be assigned to all received items (attests, material analyses, documentation, letters of guarantee, compliance declarations etc.)