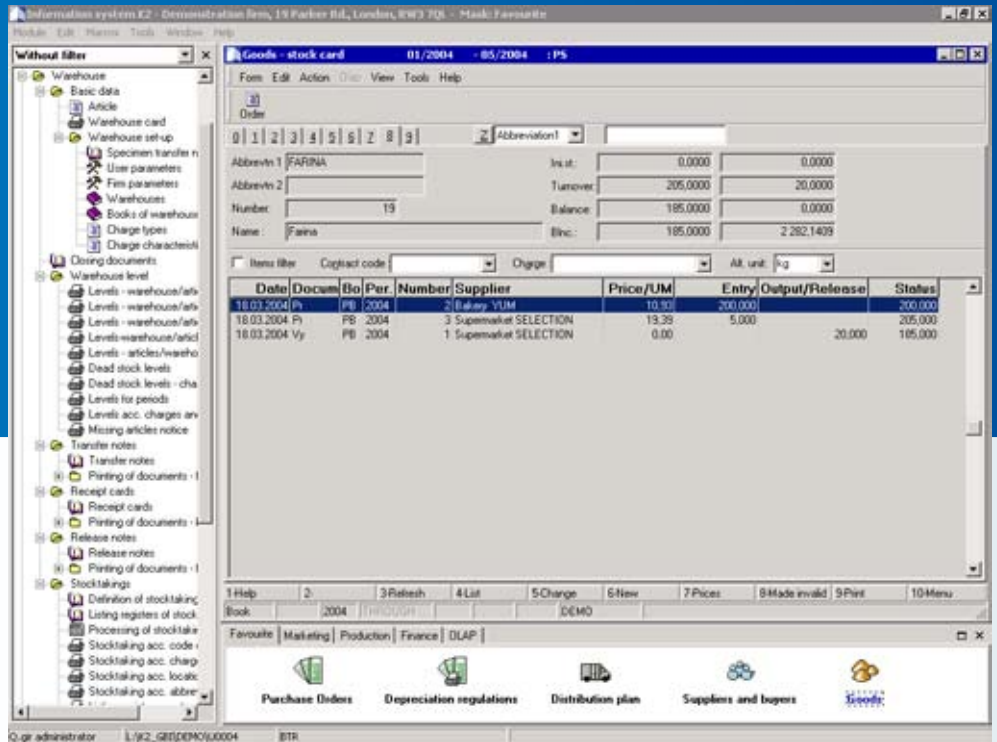




The module Stock serves for records of the flow and description of parameters for all movements in the firm concerned.

FUNCTIONS

- > Alternate stock units
- > Any structure of stocks
- > Automatic correction of inventory differences
- > Batch expiry
- > Calculation of turnover of goods
- > Consignment goods on own stocks
- > Consignment stocks
- > Consumption of assortment kinds
- > Coverage of production requirements
- > Coverage of sale requirements
- > Creating statistics concerning movements in a card in periods
- > Customer prices pursuant to groups of articles
- > Decomposition of stock level according to the article characteristics
- > Definition of seasonal minima, maxima, dead stock
- > Determination of special prices with regard to quality
- > Entering stock levels for stocktaking documents
- > Evaluation of contractors
- > Evaluation of releases and transfers according to the cost areas
- > History of movement of serial number and manufacturing number
- > Intercompany invoice ledger
- > Invoicing between cost centres
- > Links of cross filters to document items
- > Listing registers
- > Marking of the same article with different codes according to contractors/customers
- > Monitoring guarantee periods



Pages of the article card

Comprehensive overview of a stock item is ensured by means of the article card. This consists of several pages, each of them includes selection of information according to one of the selected criteria.

Records

On the first page of this card, all information is recorded serving for searching, sorting, and defining item characteristics (batch, records of contracts, customers, locations, serial numbers, alternate units, SCP, weight, optimal contractor ...).

Characteristics

For every stock card, it is possible to assign a set of monitored features, such as dimensions, colour, finishing, packaging, make, size, material etc. Thereby, these features become additional sorting criteria and stock records are kept up to such details, however, only for these items.

Finance

Another page of this card records the purchase price, acquisition by-cost, duty customs, discount group, selling prices, margin, VAT, customs tariff, currencies, costing model, overhead, customer prices, product groups, local prices, date prices, prices according to the variants etc.

Relations

The article card can be set up, in various ways, for technological procedure, for creating variant bills of materials, establishing required statements, for defining possible substitutes, specifications, variants, or calculated lot. Analogous definition is possible in order to use this card in the I-shop.

Alternate contractors

Special page of the article card converts markings, prices, time-limits, currencies, payment and delivery conditions incl. links and recalculations for alternate units and packages according to the habits of particular contractors/customers into introduced internal marking of the firm concerned. In this way, it is possible to define conversion of marking between several contractors/customers for one stock item.

Time and price lists

Every article card has its own records concerning development in time, not only in the past, but also in the future. The card is bound, in time, with currencies, prices, and allows for monitoring of any number of changes simultaneously. In this manner, it is possible to prepare price lists and calculations for any period. Change in the behaviour of the article card in the current period according to the prepared price list can be automatic, or according to the user wish.



FUNCTIONS

- > Monitoring guarantee periods for goods from separate deliveries
- > Monitoring minima, maxima, dead stock
- > Monitoring of wrapping
- > Movements of goods on stock
- > Multi-lingual names of articles
- > Pictures for article cards
- > Recording history of movements for a concrete batch (delivery)
- > Recording locations for stacking systems
- > Recording serial and manufacturing numbers
- > Releases and transfers of materials for contracts
- > Selection of batch characteristics
- > Selection of criteria for the choice of optimal contractor
- > Several bar codes for one article
- > Sorting according to quality on entry
- > Standard and quality for materials
- > Stock cards
- > Stocktaking
- > Substitutes, replacements
- > Taking quality into account when selling goods
- > Time preparation of price lists
- > Transfer notes of goods between stocks
- > Transfer of goods between cost centres
- > Valuation of stock levels by FIFO method, weighted average, running average or by planned (fixed) price
- > Variant price lists

Movements

All movements in the article card (minima, maxima, dead stock, evaluation for stock, evaluation for customer, history, turn) can be monitored according to the contract code and, at the same time, delivery with the same characteristics (common batch/quality). These conditions are defined not only for the card as a whole, but also for particular stocks individually.

On-line evaluation

After selection of the relevant page in the article card, the user can see a stock item according to his/her profession, while s/he does not lose the possibility to browse through other card pages. An advantage lies in automatic system of evaluation running against the background of the programme within framework of preset periods. Reply is displayed immediately by selecting appropriate page and it is not necessary to wait for calculation (to start a filter, report, or evaluation, if appropriate).

Displayed data with dipping

The stock level displays assigned (blocked), reserved (required), but also ordered goods; all columns on the monitor are user-specific. Detailed records of data on an item is advantageous with regard to possible breaking-up of stock records according to the relevant documents containing given item. The other dimension of the view is selection of the stock. Summary, normal, consignment, and production stocks can have tree structure.

User automats

Grouping of different data in the structure of pages of a stock item allows for definition of user automats based on links between recorded real states. Resulting function can suggest orders automatically and, furthermore, consider optimal contractor for different volumes and dates.

Purpose of the cards

Owing to general definition of the article card, it is possible to talk about resource cards. The programme allows for creation of cards for raw materials, products, semi-finished products, services, overhead materials, wrappers, operations, outputs, professions, machines etc. All of these cards make fully use of system benefits described above.

User friendliness

For every card individually, it is possible to define its own behaviour which this card brings into all operations in which it is used. Definition of characteristics can be assigned to several items by means of a mass action on the selected set of cards. Individual behaviour appears as an advantage for the user because s/he proceeds with the same working procedure and, at the same time, s/he need not take into account a whole set of exceptions defined in the cards, and despite of this, these will be applied.

System standard

Work with stock items is identical to the work in the modules Purchase/Sale. Creating receipt cards/release notes is available to all users of the modules Purchase/Sale automatically. Moreover, the module Stock enables to create stock transfer notes. The transfer note between stocks offers primarily all contract items. Transfer note for production transfers the produced unit as a whole (incl. all nesting levels), this unit is realized gradually by means of the job card. In order to induce a receipt card and goods into the stock, it is not necessary to wait for an invoice in.

Mechanism of recalculations

An advantage of the programme is system of recalculation functions. If a need arises to correct a historical movement whether as concerns quantity or amount, the programme enables to start a mechanism for price recalculation by means of which the current stock price is recalculated and substituted in all movements and all releases are repriced.

Item coverage

All planned movements and requirements for the given card with information about quantity, date and addressee are grouped in the item coverage. This function is called from stock, sale, purchase, and production. Over the stock card, it is possible to start graphic presentation of planned movements with indication of possible bottlenecks. Moreover, the coverage distinguishes the batch, contract codes, contractor, as well as variant to which it is bound.