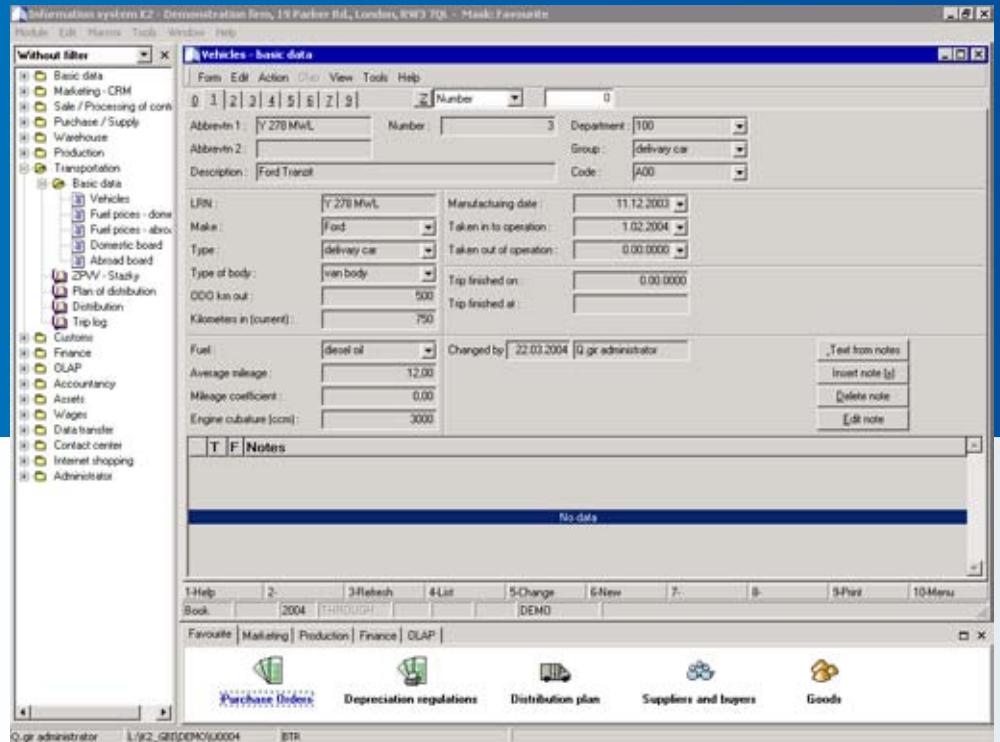




It serves for planning and controlling distribution of goods to the customers, collection of goods from the contractors, and monitoring yields of particular vehicles.

FUNCTIONS

- > Assignment of delivered goods to particular vehicles
- > Drive records – vehicle operation records
- > Driver's report book
 - type of the journey
 - crew
 - kilometre reading
 - fuelling
- > Check of working load of vehicles
- > Linking transport to invoicing
- > Linking transport to wages and personnel data
- > Monitoring costs according to the cost centres, vehicles, and contracts
- > Monitoring vehicle costs
- > Monitoring driver's yields
- > Monitoring vehicle's yields
- > Planning of distribution
- > Vehicles records



Linking distribution plan with primary documents

Documents comprising articles and products which should be transported to the customers are taken over into the distribution plan. In the distribution plan, all requirements for transportation of goods to the customers as well as requirements for collection of materials from the contractors are recorded which are represented by invoices, delivery notes, by release notes or receipt cards. Every requirement comprises direction and region according to the address in the heading, weight of included items as well as date when the goods concerned shall be handed over.

Distribution

By selecting set of documents according to the similar dates, directions, routes and by assigning an appropriate vehicle, a particular distribution is being created. It is possible to determine loading order, records concerning packages and number of pieces, stops order etc. By means of the programme script it is possible to check load capacity of the selected vehicle with regard to the quantity of goods being transported, or to decide on turns, if appropriate.

Vehicles records

All vehicles (both own and leased) which can be assigned to particular journeys are recorded by means of a separate code list. The card of vehicle includes size, load capacity, crews, extensions, accessories, etc. Specific data are available on individual pages of the card of vehicle, e.g. basic data, towed vehicles, rates (waiting time, driving, loading etc.), fuel consumption (in the summer, in the winter, in terrain or similar), vehicle costs (fuelling, tyres, repairs etc.), vehicle operation records, documents attached to the vehicle etc.

Vehicle's operation and transport capacity record

All vehicle operation records are kept according to the date, vehicle, number and they serve for statistical compilations. Every record is divided into individual journeys with recording necessary particularities (customer, departure, arrival, waiting time, kilometre reading, kilometres with loading, invoicing, cost centre, contract code etc.).

Driver's report book

For business vehicles as well as personal cars, a simple driver's report book is intended which limits entering data for recording vehicle movement to the most necessary information: driver, purpose of the journey, date, mileage, and fuelling. Some properties and functions are similar to the vehicle's operation and transport capacity records. However, the aim is to record as simply as possible all formalities resulting from the statutory duty.



Driver's trip ticket

The driver's trip tickets serve for easy monitoring and approval of journeys. Boarding in inland and abroad as well as fuel prices can be set up by means of parameters.

Control functions

For each vehicle, a permit or usual routes (so-called regular journeys) can be entered with a link to a concrete day in the week. The programme is able to control/block journeys outside the working rhythm as well as entered pauses (service inspection, repairs ...).

Link into the IS K2

As a matter of fact, all parts and data entered into the system are used such as contractors, customers, their documents, own cost centres, contract codes, articles code list, creating tasks and activities, link to the mail, link onto the assets to particular cards and documents representing costs or yields for particular vehicle (activity).